



Battery-Box Premium LV BMU - IP55 Instruction Manual

V 1.3

VALIDITY

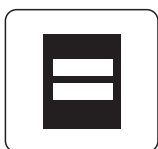
This document is valid for the Battery-Box Premium LV BMU - IP55 (Battery Management Unit) (“BMU”) from firmware version 1.11.

INTENDED USE

BMU is applicable for the BYD Battery-Box Premium LV system(s) (LV FIEX, LV FIEX LITE, LVS, LVS LITE, LVL) (“Battery-Box”), and works as a control unit for the system(s).

PRODUCT DESCRIPTION

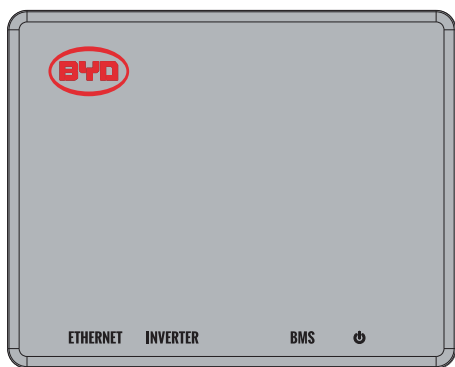
BMU is equipped with a WLAN interface as a standard. The APP Be Connect could communicate with BMU through the WLAN.



Be Connect



The WLAN name and code are on the label of BMU.

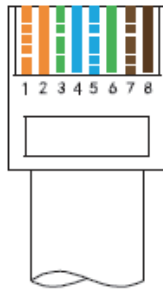


A B C D

- A:** Ethernet port
- B:** RJ45 port for connection with an inverter
- C:** RJ45 port for connection with Battery-Box
- D:** Stop button and status LED



Assignment of Port B



| No. | Assignment |
|-----|------------|
| 1 | 485-A |
| 2 | 485-B |
| 3 | Unused |
| 4 | CAN H |
| 5 | CAN L |
| 6 | Unused |
| 7 | Unused |
| 8 | Unused |

SCOPE OF DELIVERY

- 1× BMU
- 1× Instruction Manual
- 3× Connectors
- 1× Hanger

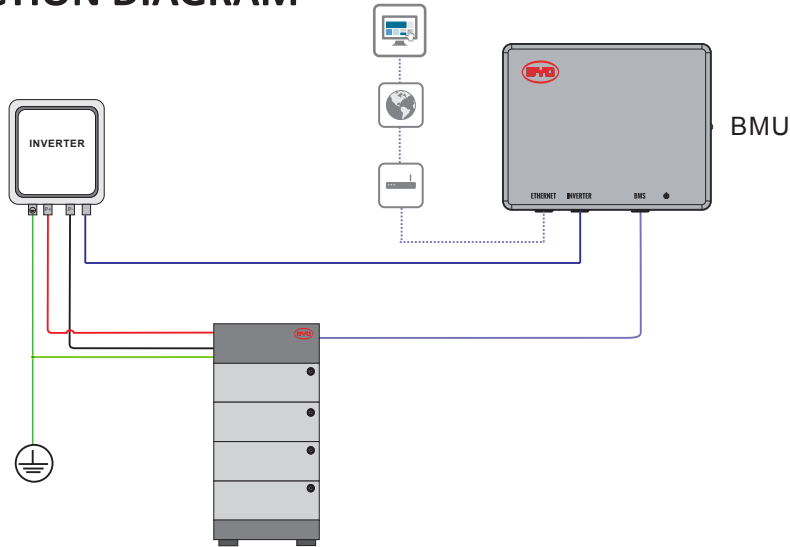
TECHNICAL DATA

| | |
|---|-------------------------|
| Communication | Ethernet/CAN/RS 485 |
| Input voltage* | 40-60 V |
| Input current | 200 mA |
| Weight | 2 kg |
| Dimensions (L×W×H) | 222 mm × 154 mm × 59 mm |
| Ambient temperature in operation | -10°C to 50°C |
| Relative humidity (non-condensing) | 5% to 95% |
| Degree of protection (in accordance with IEC 60529) | IP55 |

*BMU is powered by Battery-Box through the network cable. No other power supply is needed.



CONNECTION DIAGRAM

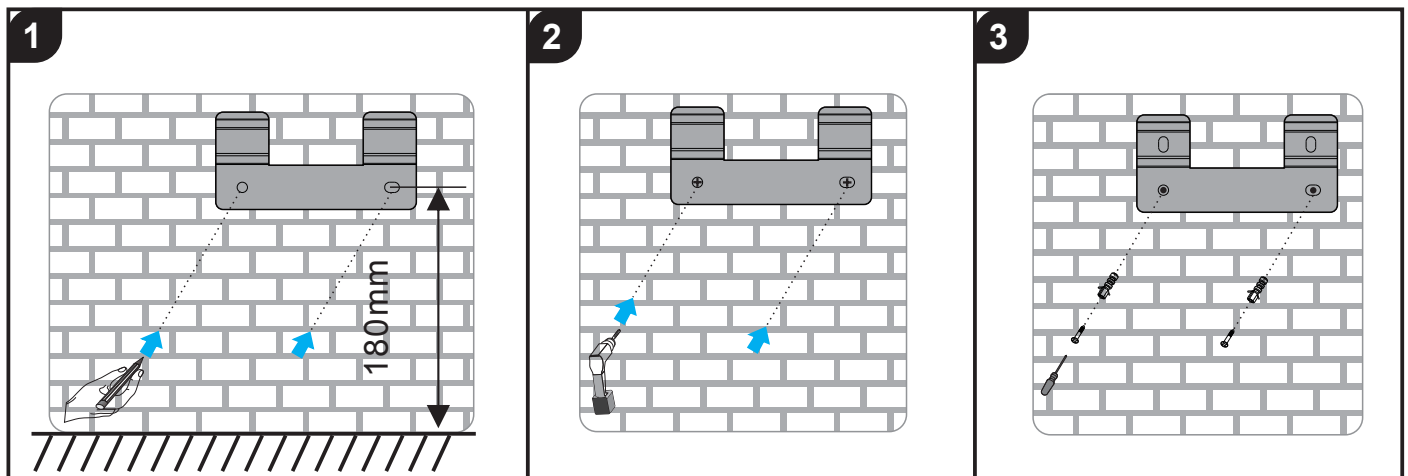


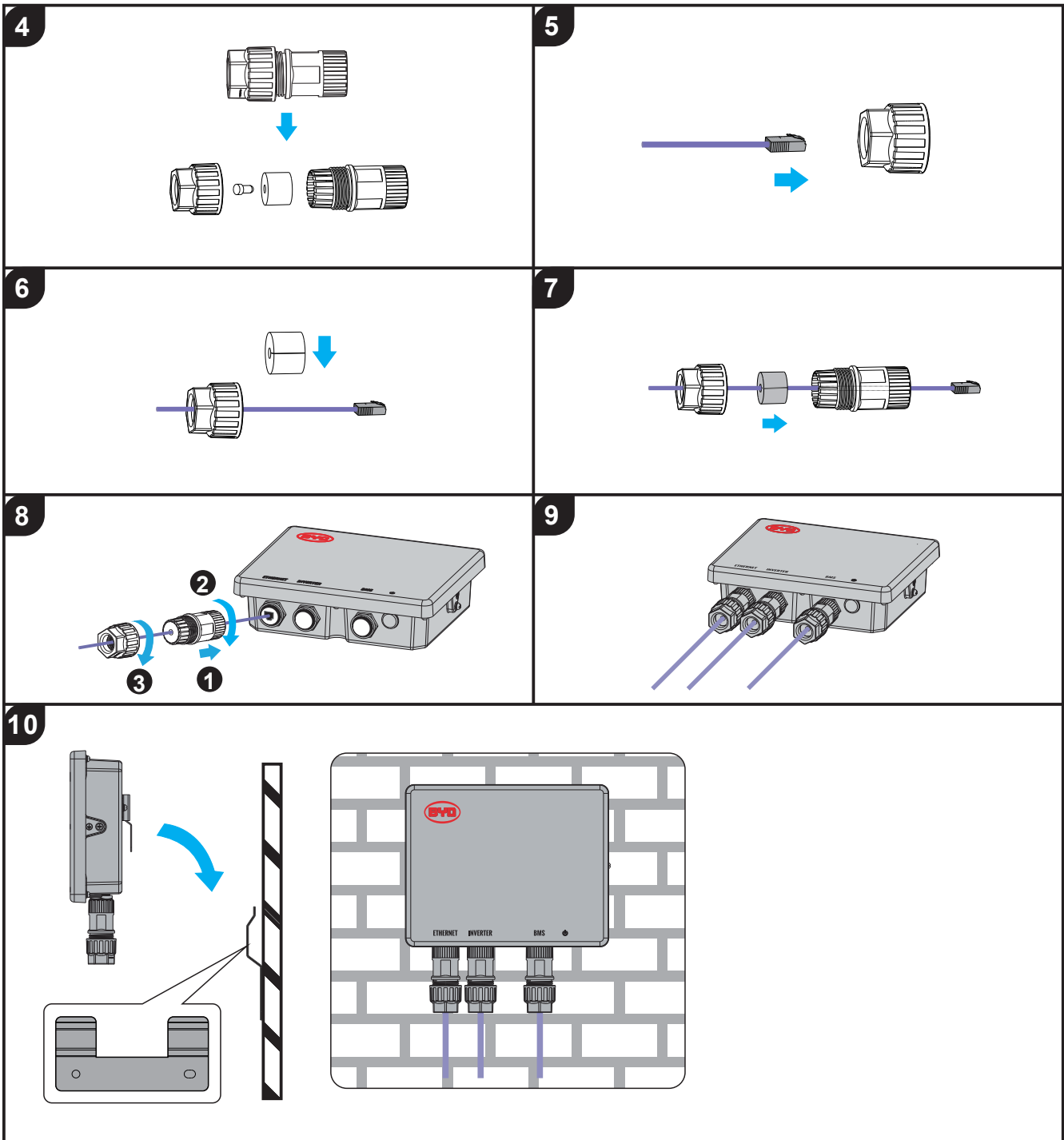
| | BMU | SMA | STUDER | VICTRON | SELECTRONIC | SOLAREEDGE | GOODWE | SUNGROW | SCHNEIDER | SOLIS | Deye |
|-------|-----|-----|--------|---------|-------------|------------|--------|---------|-----------|-------|------|
| CAN H | 4 | 4 | 4 | 7 | 1 | 4 | 4 | 4 | 14 | 4 | 4 |
| CAN L | 5 | 5 | 5 | 8 | 2 | 5 | 5 | 5 | 12 | 5 | 5 |

1. Detailed connection instructions with inverters could be read in the Battery-Box LVL/LVS Quick Start Guide.
2. The communication cable between BMU and an inverter cannot be longer than 10 meters. And the cable should be CAT 5 shield or above.
3. Please make sure the correct pins are connected between BMU and an inverter.
4. The connection between BMU and Battery-Box should be the Straight-Through Wired Cable.
5. Connected to the Internet is highly recommended.

MOUNTING AND CONNECTION

Install BMU on the wall or a rack. The recommended expansion screw size is M6×12. The minimum distance from the ground is 180 mm.





COMMISSIONING

1. Make sure an inverter, Battery-Box, and BMU are correctly connected.
2. Press the Start Button on Battery-Box for 3 seconds.
3. Refer to Battery-Box Premium LVL/LVS Operating Manual for further steps.

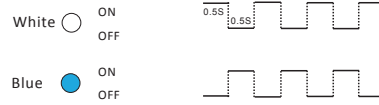
UPDATING FIRMWARE

The firmware of BMU could only be updated when it operates with Battery-Box. Please refer to Battery-Box Premium LVL/LVS Operating Manual for further information.



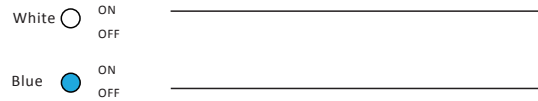
LED status

Flashing white and blue alternatively



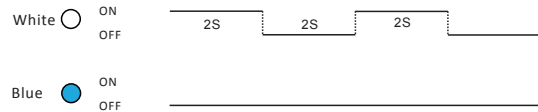
The battery system is initiating.

Static white



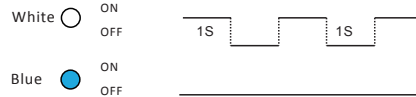
Idle (the battery system is neither charging nor discharging).

Flashing white slowly



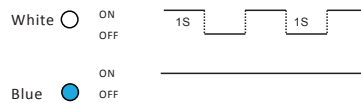
The battery system is charging.

Flashing white quickly



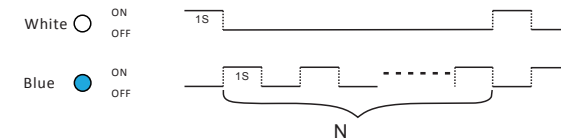
The battery system is discharging.

Flashing white and glowing blue



The battery system is discharging, and the SOC of Battery-Box is below 15%.

Flashing white and blue



An error has occurred.

**1s white once then 1s blue several times are a circle, and also error codes. The definition of the error codes could be found in Battery-Box Premium LVL /LVS Operating Manual.

DISPOSAL

Dispose of BMU following the locally applicable disposal regulations for electronic waste.



CONTACT

BYD Global Service

bboxservice@byd.com

Telephone: +86 755 89888888-47175

Address: No.3009,BYD Road, Pingshan,
Shenzhen,518118,P.R.China

www.bydbatterybox.com

Social media link

<https://www.facebook.com/BatteryBoxBYD/>

https://twitter.com/BYD_BatteryBox

<https://www.linkedin.com/company/byd-battery-box>

Australia

Alps Power Pty Ltd
service @alpspower.com.au
Telephone: +61 2 8005 6688
Address: 14/47-51 Lorraine
St Peakhurst NSW 221
www.alpspower.com.au

Europe

EFT-Systems GmbH
service@eft-systems.de
Telephone:
+49 9352 8523999
+44 (0) 2037695998(UK)
+34 91 060 22 67(ES)
+39 0287 368364(IT)
Address: Bruchtannenstraße 28, 63801
Kleinostheim, Germany
www.eft-systems.de

South Africa

AFRIPLUS ENERGY GROUP (PTY)
LTD
support @afriplusenergy.co.za
Telephone: +27 21 140 3594
Address: The Pavilion, Corner of
Dock & Portswood Road, V&A
WATERFRONT, 8001, CAPE
TOWN

USA

BYD US Service
bboxusservice@byd.com
Telephone:+1(833)338-8721

LATAM

BYD LATAM Service
bboxservLATgrp@byd.com
